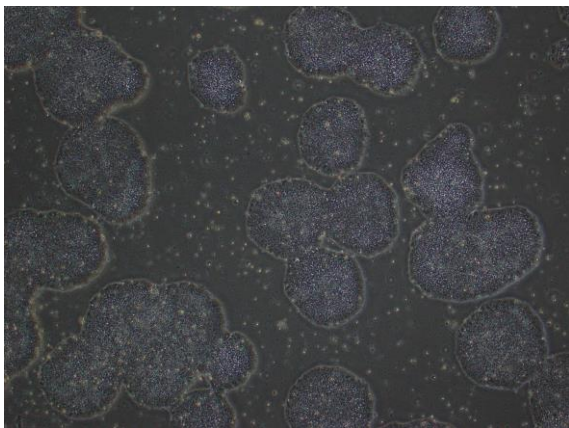
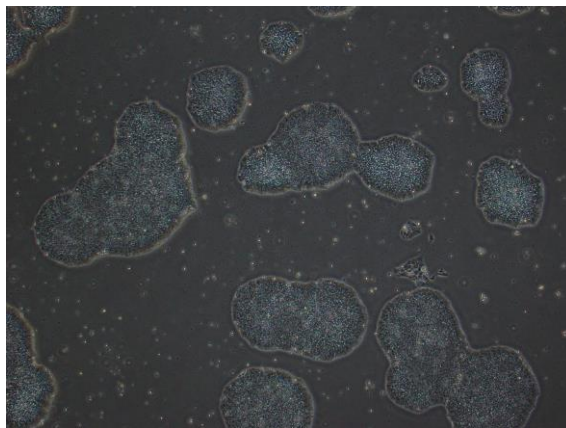


【 CiRA-j-1551 】 Morphology of iPSC colonies

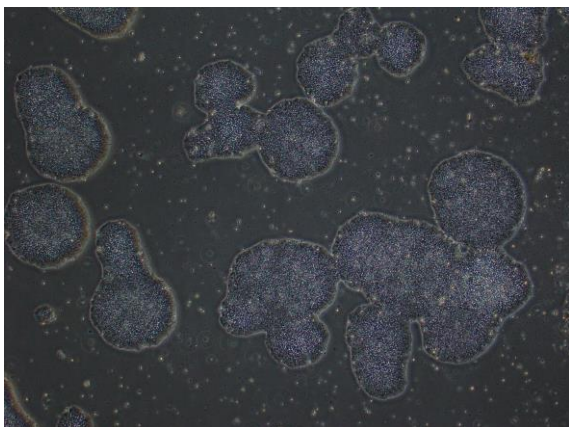
CiRA-j-1551-A: passage-3



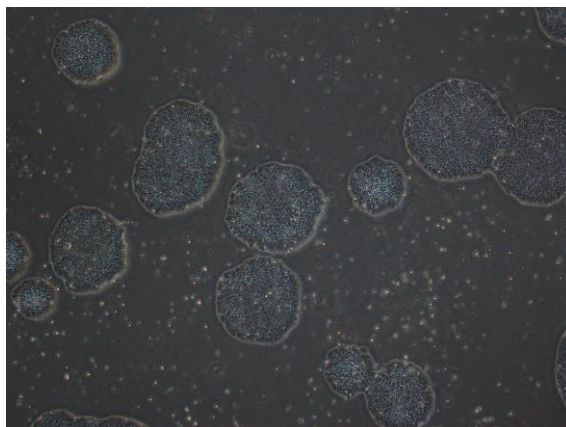
CiRA-j-1551-B: passage-3



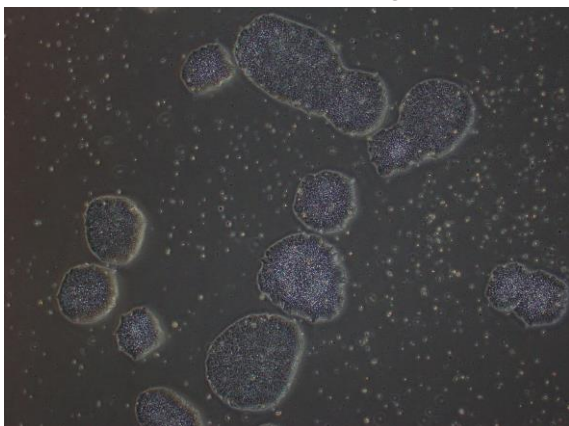
CiRA-j-1551-C: passage-4



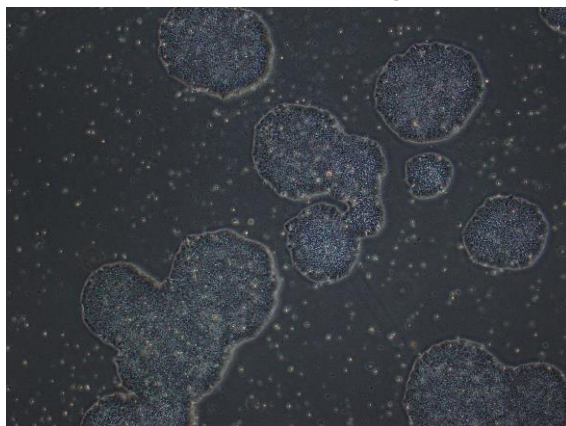
CiRA-j-1551-D: passage-3



CiRA-j-1551-E: passage-3



CiRA-j-1551-F: passage-3



(All images were captured at 4x magnification)